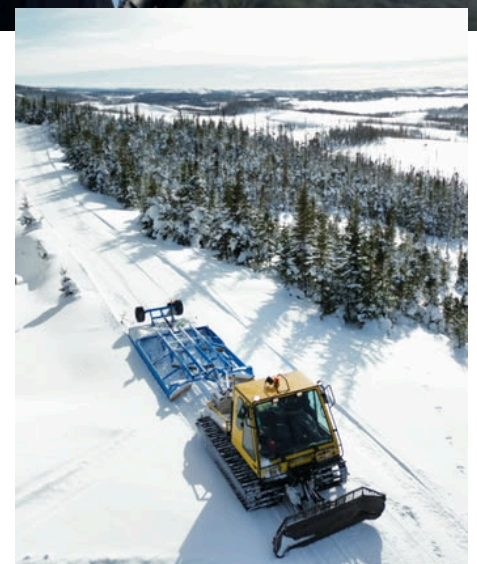


ROCK THE TRAILS

An Early Start, A Strong Season:

Trails across Newfoundland saw excellent conditions and high ridership following one of the earliest starts to grooming in recent memory. Groomers logged long hours, volunteers kept shelters stocked, and trail pass sales reflected strong support for organized snowmobiling.

Although some east coast clubs have wrapped up grooming due to changing conditions, central and western regions are still seeing great riding with grooming ongoing. As the season shifts toward spring, the energy and commitment behind this standout year continue to shine.



Tableland Snowriders

Meet our new Executive Director, Mark Lamswood!

We're excited to welcome Mark Lamswood as the new Executive Director of the Newfoundland and Labrador Snowmobile Federation. A lifelong snowmobiler with deep roots in the province, Mark brings extensive experience in business, tourism, government, and community economic development.

Mark is focused on strengthening trails, advancing the ATV sector, and creating year-round opportunities that benefit riders, local businesses, and rural regions across the province. He is committed to safe, sustainable, and environmentally responsible trail development while enhancing the experience for both residents and visitors.

With his leadership and vision, Mark joins the NLSF team as we continue working to connect communities and maximize the potential of our four-season trail network.



"In 2026 moving forward, it's time to connect our communities, support our local businesses and invite locals and visitor riders of all ages to enjoy our four-season trail network to the fullest."





WE'RE RIDERS HELPING RIDERS

APPLY NOW



Fast & Easy Approvals



Flexible Financing Options



Purchase through a dealer or privately



SCAN THE QR CODE & GET RIDING



IVAN PAYNE

800-815-6424

Ivan@allprofinancing.com

Fueling Communities, One Ride at a Time

Snowmobilers do more than ride the trails. They help support the communities they travel through.

Last month, we hosted a ride with MP Carol Anstey and Mayor Dean Ball of Deer Lake, to showcase the provincial trail network, the dedication of volunteer clubs, and the economic impact snowmobiling brings to the province. Along the route, we stopped at a warm-up shelter — an important part of the trail system for riders — and visited The Jackladder, a popular destination offering fuel, meals, and accommodations, where we were treated to club sandwiches and moose soup.

Spending on fuel, food, lodging, parts, and repairs helps support local businesses and demonstrates that organized snowmobiling is not only recreational, but also an important contributor to rural communities throughout Newfoundland and Labrador.



IRVING
BIG STOP
Restaurant

**Trail break?
Make it a Big Stop.**

Fuel yourself – and your ride –
and get back to enjoying
the journey ahead.

Stop by any of our locations

Clareville | Deer Lake | Gander | Goobies | Donovan's (Mount Pearl)

irvingoil.com/bigstops



Connecting Across Canada: NLSF at CCSO 2026

Each year, the NLSF joins snowmobile organizations from across the country at the Canadian Council of Snowmobile Organizations (CCSO) annual meeting. This year, we headed to Saskatchewan to connect with fellow leaders to share ideas, and discuss the issues shaping our sport, including trail development, safety, and national advocacy.

Getting out on the trails is always a highlight. Riding in different provinces gives us a firsthand look at how trail systems operate and the unique experiences each region offers.

Opportunities like this build connections across provinces and help keep snowmobiling strong in Canada.





TRACK INC
*Superior quality equipment for snow grooming,
 terrain maintenance & off road transport*

*Partnering with NLSF to help promote the
 safe practice of snowmobiling throughout
 Newfoundland & Labrador*




WWW.TRACKINC.COM - FACEBOOK.COM/TRACKINCORPORATED





Contact us today!

(819) 300-2586
Canada



(802) 332-7779
USA



GO!

Groomer Operator Spotlight: Meet Phil – The Man Behind the Trails

For more than three decades, Phil has been a central figure in snowmobiling in the Hawkes Bay area. A founding member of the Northwest Trackers (NWT), his involvement dates back to the early 1990s, even before the formation of the NLSF. He has remained at the heart of trail operations ever since.

Today, Phil continues to serve as the club's lead groomer operator, logging roughly 200 hours each season maintaining the trail system. But his work goes well beyond grooming. He handles all equipment maintenance and repairs, often working in tough Northern Peninsula conditions to get the groomer back in action and on the trails as soon as possible for riders.



An advertisement for Pinotti snowmobile groomers. The top part features the Pinotti logo in red script. Below it, the text reads "PROUD TO BE YOUR TRAIL GROOMING PARTNER IN" in white, followed by "NEWFOUNDLAND AND LABRADOR" in white text on a red background. The main image shows two snowmobile groomers parked on a snowy trail. At the bottom, there is contact information: "REACH OUT TO YOUR LOCAL SALES REP", "The Shop Industrial", "tsi@theshopindustrial.com", and "(800) 663-3724". To the right of this text is a QR code with the text "SCAN THIS CODE TO LEARN MORE!"

Phil has played a key role in major trail infrastructure projects over the years, including work on the River of Ponds and Torrent River bridges, helping ensure important trail connections remain open and accessible. He's also quick to respond when washouts, water holes, or other issues threaten sections of trail, often coordinating repairs and temporary fixes to keep grooming operations moving.

Beyond the machine, Phil has helped strengthen the snowmobiling community by teaching snowmobile safety courses, supporting club events and fundraisers, and keeping members informed with grooming updates and alerts about trail hazards. His leadership, dedication, and decades of experience have made him a respected and trusted figure within the Northwest Trackers and the wider snowmobiling community.

Thank you, Phil, for the countless hours, commitment, and care you continue to put into the trails year after year.

Newfoundland and Labrador Hydro reminds you to please

Make Every Ride A Safe Ride



- Ensure your snowmobile is working properly.
- Avoid riding along power lines and watch for guy wires.
- Steer clear of high snow banks around overhanging power lines.
- Proceed slowly near utility workers, vehicles or equipment.
- Stay off the ice, including reservoirs and rivers near hydroelectric dams where ice is unstable.

   nlhydro.com

 newfoundland labrador
hydro



71 O'Leary Avenue, St. John's,



709-728-9733



info@gearedeast.com



Quality new & used parts



High quality mechanical work



Rider driven knowledge & service



Follow us on Facebook



Looking to explore Newfoundland's backcountry? Snowmobile rentals available in Cormack





Riders Lens: Sharing the Ride

This February, riders across Newfoundland took part in Take a Friend Snowmobiling Week alongside International Snowmobile Ride Day on February 14, making it a perfect Valentine's Day outing.

From day rides to weekend getaways, riders shared the experience with friends, family, and partners. These moments capture what snowmobiling is all about: good company, fresh air, and time well spent outdoors.

POLARIS
RIDECOMMAND



Explore
Newfoundland
with coverage
you can count on



Get a snowmobile insurance
quote online in just minutes!



Investments. Insurance. Advice.



*Terms and conditions apply. Home and Auto Insurance is underwritten by Co-operators General Insurance Company. Not all products are available in all provinces. Co-operators General Insurance Company is committed to protecting the privacy, confidentiality, accuracy and security of the personal information that we collect, use, retain, and disclose in the course of doing business. Please refer to our privacy policy for more information. Co-operators® is a registered trademark of The Co-operators Group Limited and is used with permission. This material is provided for informational purposes only. Please refer to your policy for applicable coverage details, limitations, and exclusions. © 2025 Co-operators General Insurance Company ICA-3870(10/25)


SUPPORT THE TRAILS

with *NLSF gear*




Check out the latest additions to our NLSF merch lineup. We've added some new colors and styles this season, so there are even more ways to show your support for NLSF trails.


If something catches your eye, just reach out to us by phone, email, or Facebook to place your order.



fleece beanie
\$25.00




cable knit toque
\$25.00




classic ball cap
\$20.00

NEW!



trucker snapback
\$25.00



trucker snapback
\$25.00

NEW!



topo hoodie
\$40.00

50% OFF




graphic hoodie
\$20.00 ~~\$40.00~~


50% OFF



graphic hoodie
\$20.00 ~~\$40.00~~




splash tee
\$10.00 ~~\$15.00~~



splash tee
\$10.00 ~~\$15.00~~

NEW!



topo tee
\$20.00



topo long sleeve
\$25.00

*Tax not included

Snowmobiling? Mind the Line.

Electricity is everywhere you go, even if you're off the beaten path.

Look for hazards that can be harder to see in winter conditions. Be cautious of guy wires and avoid power line rights-of-way.

NewfoundlandPower.com/Safety



Thank you to our
"Friends of Snowmobiling"
for your continued support



WM. Perry Trucking
Deer Lake, NL
709-636-1650
709-635-2506

Newfoundland & Labrador Snowmobile Federation
7 Wellon Drive
Deer Lake, NL A8A 2G6
1 (709) 635-4395

info@nlsf.org |  